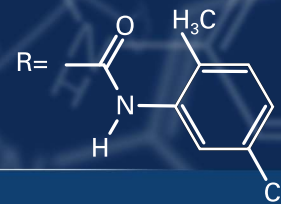


CHIRALPAK® AY-H Chromatograms



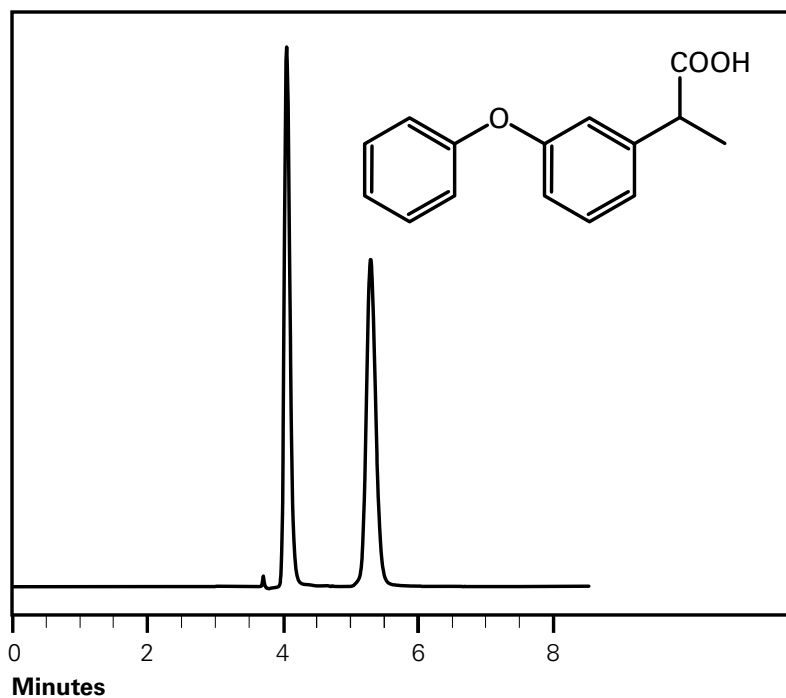
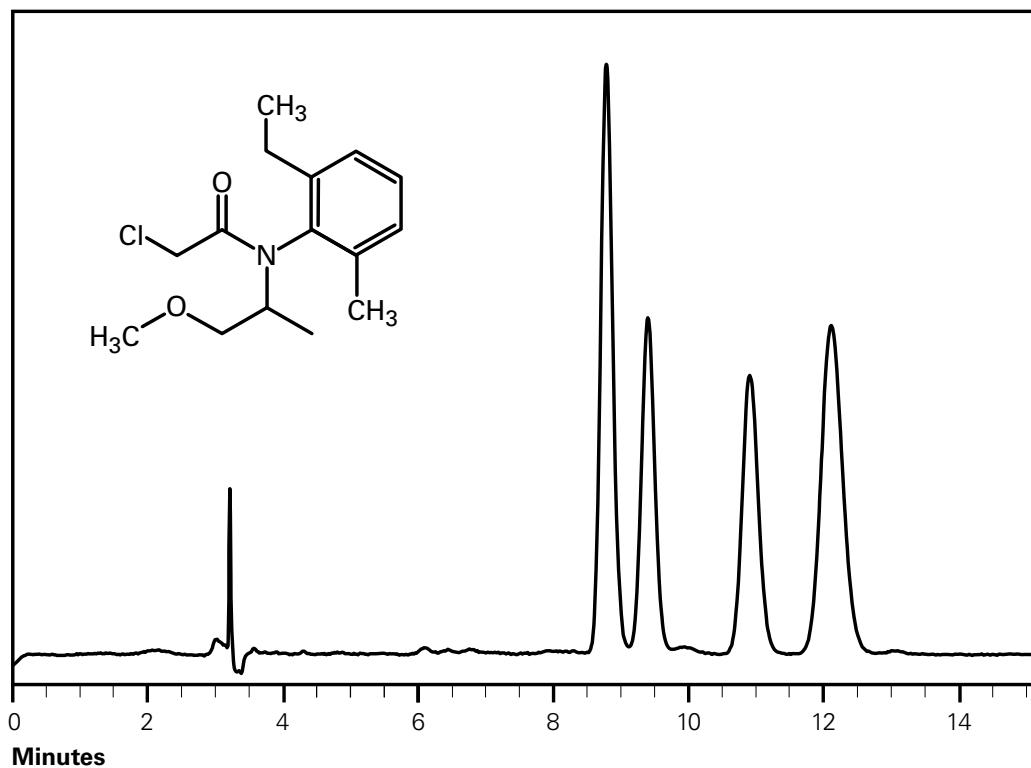
Metolachlor

Column: CHIRALPAK AY-H (4.6 mm x 250 mm)

Mobile Phase: Hexane-EtOH 95:5

Flow Rate: 1 mL/min

Temperature: 25°C



2-(3-phenoxyphenyl)propionic acid

Column: CHIRALPAK AY-H (4.6 mm x 250 mm)

Mobile Phase: Hexane-IPA 80:20 + 0.1% TFA

Flow Rate: 1 mL/min

Temperature: 25°C